

# Datasheet

## Hull Pneumatic locker

# T-ISS

Revision 2020

### Product description

T-ISS pneumatic locker is a similar safety product with our pilot ladder magnet locker.

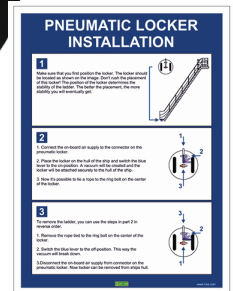
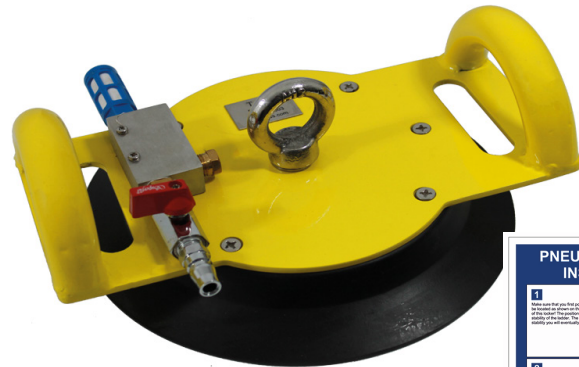
First difference is the pneumatic lockers work with a vacuum pressure, instead of magnets.

The other one is that the pneumatic locker needs to anchor both ladders and aluminum stairs.

A compressor that has 1 HP, is enough to generate this system

Manufactured abide by IMO Resolution A. 1045(27)

### Pictures



### Dimensions

Sizes:

Width Length Height Weight

250 mm 210 mm 100 mm 3.0 kg

(Lift rate: 300 kg/ Clamp rate: - 850 kg)

HS code : 8301,1000

### Certificates & Standards

- DNV witness tested

### Applications & Use

Installation

1. Put the product on a fixed position and connect the air hose.
2. Use a sling or rope to tie the locker to a pilot ladder.
3. Open the air valve so that is fully seated against the outer wall of the hull.

How to Remove

1. Bound to remove the sling or rope attached to the air valve and lock safety pneumatic locker.

### Specifications

- Model: PNLVE-2
- Painted: Powder coating
- Material: Steel & Stainless steel
- Benefit: Use air outer wall of the vacuum pad hull 300~320 kgf/cm<sup>3</sup> accomodation ladders. Easily close the air supply lever with 0 kgf/cm<sup>3</sup> and only need 300~320kgf/cm<sup>3</sup> power fixed.